



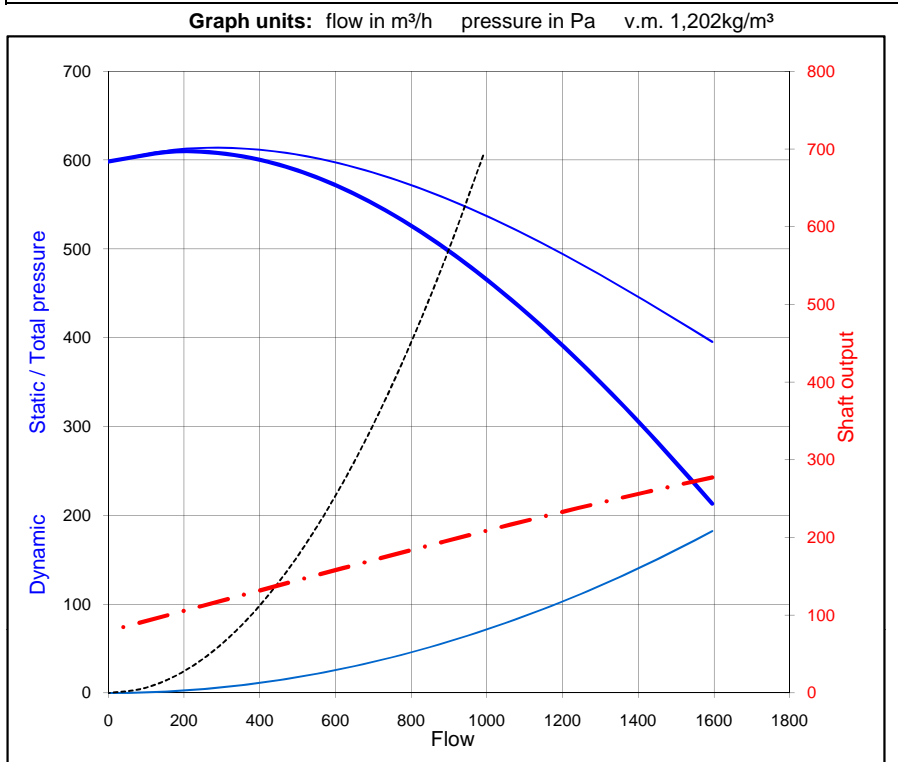
**FAN DATA SHEET**

**Fantype:** CV-180/1 V-2008 03o 1-0-1,4

Requested data		
flow	900 m³/h	
static pressure	500 Pa	1,202 kg/m³

<b>Client:</b>	<b>offer:</b>
<b>Project:</b>	<b>order:</b>
<b>Remarks:</b>	

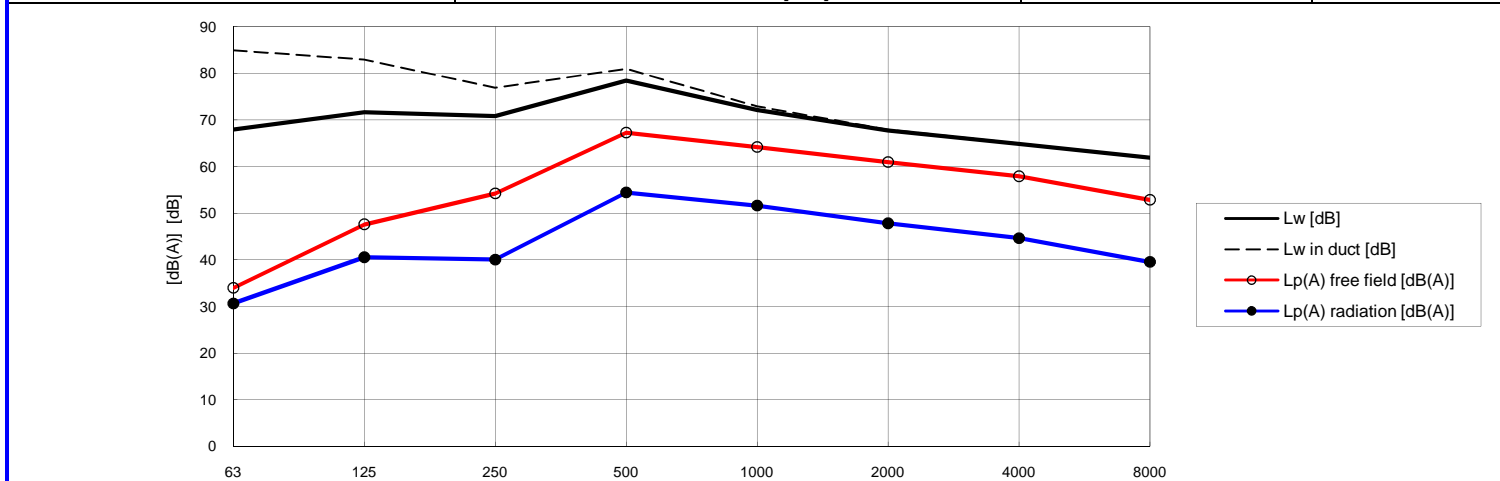
Operating data		
flow duty point	m³/h	
pressure	static	500 Pa
	total	558 Pa
	dynamic	57,9 Pa
temperature medium	20 °C	
specific mass	1,202 kg/m³	
power duty point	196 Watt	
efficiency	71 %	
velocity	outlet	9,8 m/s
	inlet	9,8 m/s
motor	4 pole	tipspeed 27 m/s



Dimensions		
impeller diam	360 mm	Inertia 0,09 kgm²
approx starting up time DOL sec		
type of blades	16x	radial
material impeller	Alu 226	housing Alu 226
blade frequency	387 Hz	
outlet	diameter	180 mm
inlet	diameter	180 mm

Electric data motor		
power	0,22 kW	4 poles
voltage	230V V	50 Hz
current, full load (In)	2,2 Amp	3,1 Is/In

Amount	1	[-]	distance free field	1	[m]	Remarks
Silencer	none		acoustic isolation		[mm]	no + reverberated no correction no



				63	125	250	500	1000	2000	4000	8000Hz
Sound power level PWL	Lw	<b>81,2</b>	[dB]	68	72	71	78	72	68	65	62
		<b>78,1</b>	[dB(A)]	42	56	62	75	72	69	66	61
Sound power level in duct PWL	Lw	<b>88,6</b>	[dB]	85	83	77	81	73	68	65	62
	Lw(A)	<b>80,2</b>	[dB(A)]	59	67	68	78	73	69	66	61
Sound pressure level free field SPL free in- or outlet	Lp	<b>73,2</b>	[dB]	60	64	63	70	64	60	57	54
	Lp(A)	<b>70,2</b>	[dB(A)]	34	48	54	67	64	61	58	53
Sound pressure level free field SPL radiation housing	Lp	<b>62,6</b>	[dB]	57	57	49	58	52	47	44	41
	Lp(A)	<b>57,4</b>	[dB(A)]	31	41	40	54	52	48	45	40

user: s.geraedts 11-4-2008

**ROTODYNE VENTILATOREN B.V.**

Postbus 95, 5800 AB Venray / Nederland / Keizersveld 14, 5803 AN Venray  
 Tel +31-(0)478 55 99 55 / Fax +31-(0)478 55 99 00 / E-mail info@rotodyne.nl / Website www.rotodyne.nl